

Bingham County Road Classification and Zoning Map

Legend

Bingham County Roads

- Arterial (Paved)
- Arterial (Gravel)
- Major Collector (Paved)
- Major Collector (Gravel)
- Minor Collector (Paved)
- Minor Collector (Gravel)
- Local (Paved)
- Local (Gravel)
- Local (Dirt)

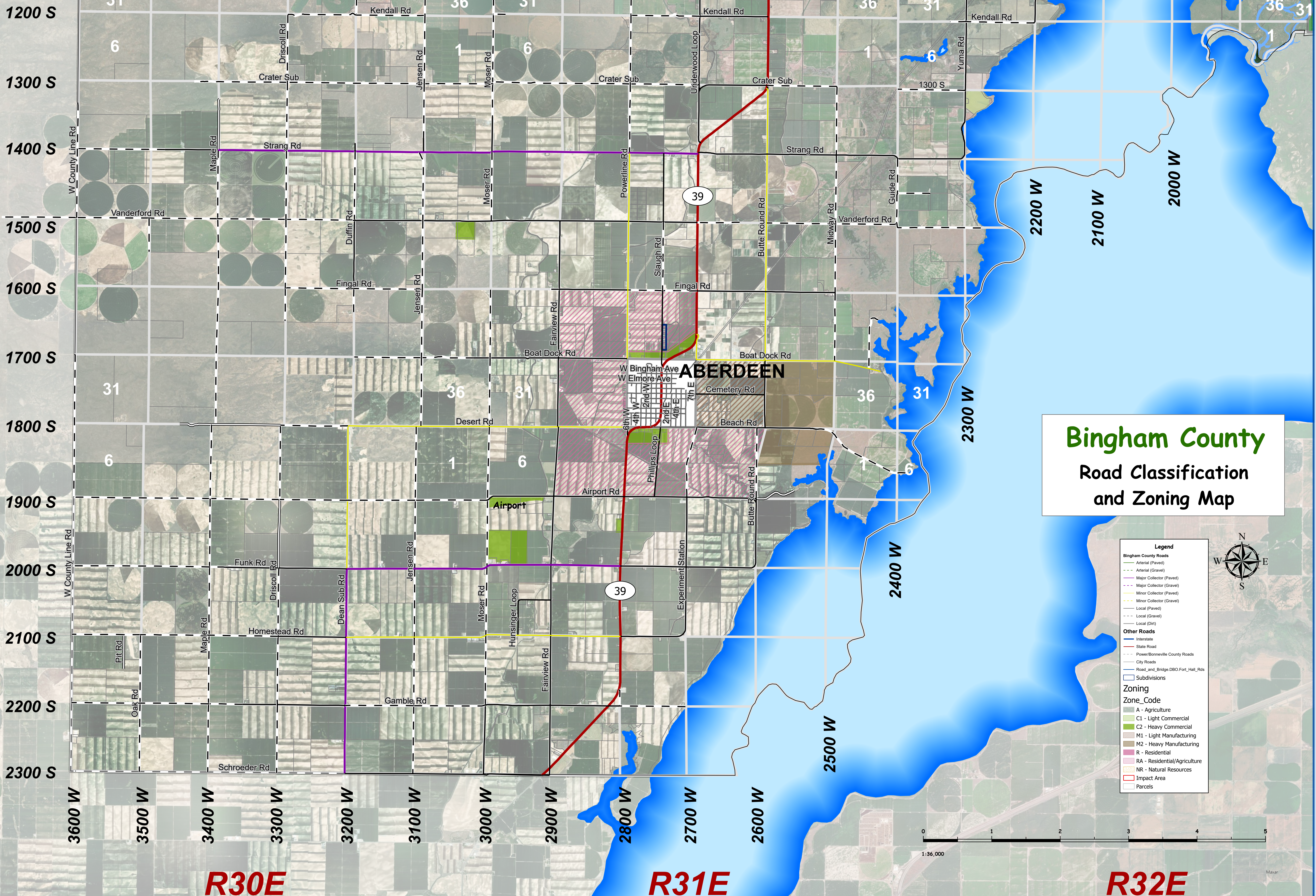
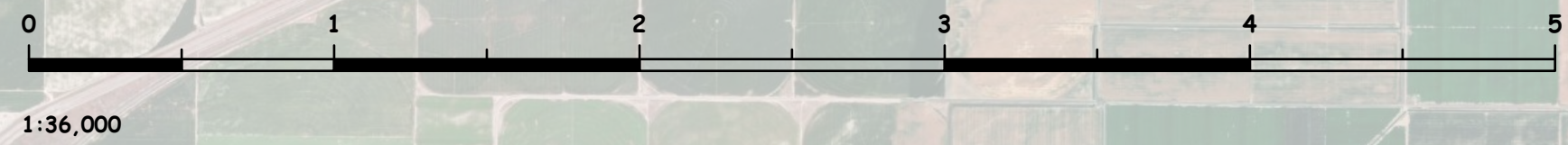
Other Roads

- Interstate
- State Road
- Power/Bonneville County Roads
- City Roads
- Road_and_Bridge DBO, Fort_Hall_Rds
- Subdivisions

Zoning

Zone_Code

- A - Agriculture
- C1 - Light Commercial
- C2 - Heavy Commercial
- M1 - Light Manufacturing
- M2 - Heavy Manufacturing
- R - Residential
- RA - Residential/Agriculture
- NR - Natural Resources
- Impact Area
- Parcels



T5S

T6S

R30E

R31E

R32E